

DATE: 5/21/2025 BY: TAJ

DYNAMIC AIR
Conveying Systems

1024712 1023469 1021880 1021095
3"-30" SUPERSLIK®
ABRASION RESISTANT
TUBING BEND, (2) TYP
SERIES 442
SEE MANUAL DA120390

1021463 1024712 1023469 1021095
3"-15" SUPERSLIK®
ABRASION RESISTANT
TUBING BEND, SERIES 442
SEE MANUAL DA120390

1002790
3" SCH 40 CONVEYING
LINE PIPE
SEE MANUAL DA061692

6880300-0001 1071513
3" TUF-LOK™
CONVEYING LINE COUPLING
SERIES 688, (5) TYP
SEE MANUAL T102500

5'-0" TYP
AIR SAVER
SPACING

1124301 1111112 1035100 1003225 1003185 1003170
DC-5® AIR SAVER FITTING
W/ 1/2" NPT COUPLING
AND 4" LG PIPE NIPPLE
SERIES 708, (22) TYP
SEE MANUAL DA030105
DWG A-395-568 AND
NOTE 4 ON SHEET 1

1142320
900 CU FT CAPACITY
STORAGE SILO
SEE SHEET 5
FOR STACK-UP

C1133180
8J-50 TRANSPORTER
SEE SHEET 6
FOR STACK-UP

1024712 1023469 1021880 1021095
3"-90" SUPERSLIK®
ABRASION RESISTANT
TUBING BEND
SERIES 442, (2) TYP
SEE MANUAL DA120390

3"-30" SUPERSLIK®
ABRASION RESISTANT
TUBING BEND
(REF)

ASH THICKENER
(EXISTING)

**RED MARKINGS ARE
MODIFICATIONS TO
DYNAMIC AIR'S CERTIFIED
DRAWING MADE BY MSD.**

CAT5/CAT6 COMMUNICATION CABLE
TO OPERATOR CONTROL ROOM

4" SCH 40 SPOOL
W/ 9 PSIG
PURGE CONNECTION
(BY CUSTOMER)

4" SCH 40 INLET
(EXISTING PORT TO BE
REALIGNED BY CUSTOMER)

4" MANUAL GATE
VALVES, (2) TYP
(BY CUSTOMER)

3" TO 4" SCH 40
CONNECTION
(BY CUSTOMER)

VACUUM/PRESSURE
RELIEF VALVE
(BY CUSTOMER)

VENTED TO CUSTOMER'S
DUST COLLECTION
(BY CUSTOMER)

THERMAL CONVERTER
(EXISTING)

ELEVATION
(LOOKING NORTH)

* CLOUDED PORTIONS OF 3" CONVEYANCE LINE WILL BE INSTALLED UNDER FUTURE PROJECT.

[illegible]

CERTIFIED	
DATE: <u>5/21/2025</u>	BY: <u>TAJ</u>
<i>DYNAMIC AIR</i> Conveying Systems	

[illegible]

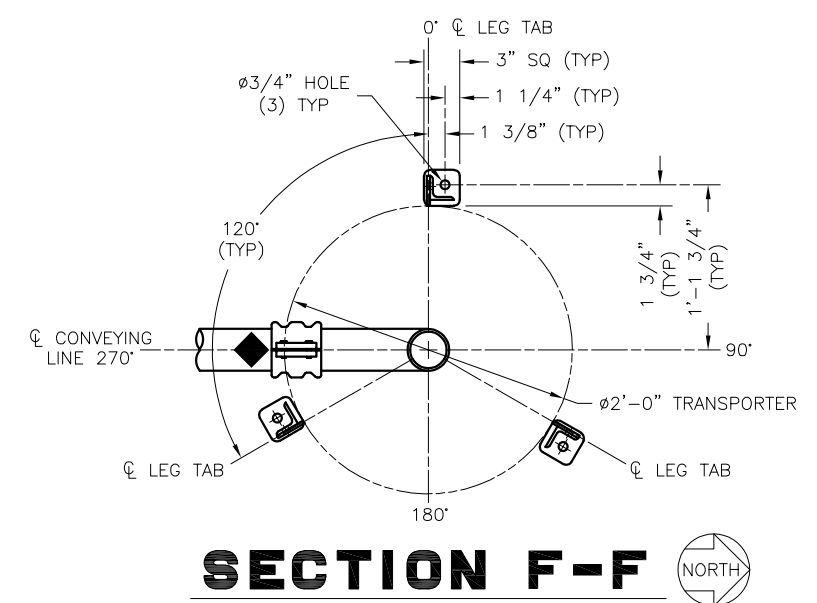
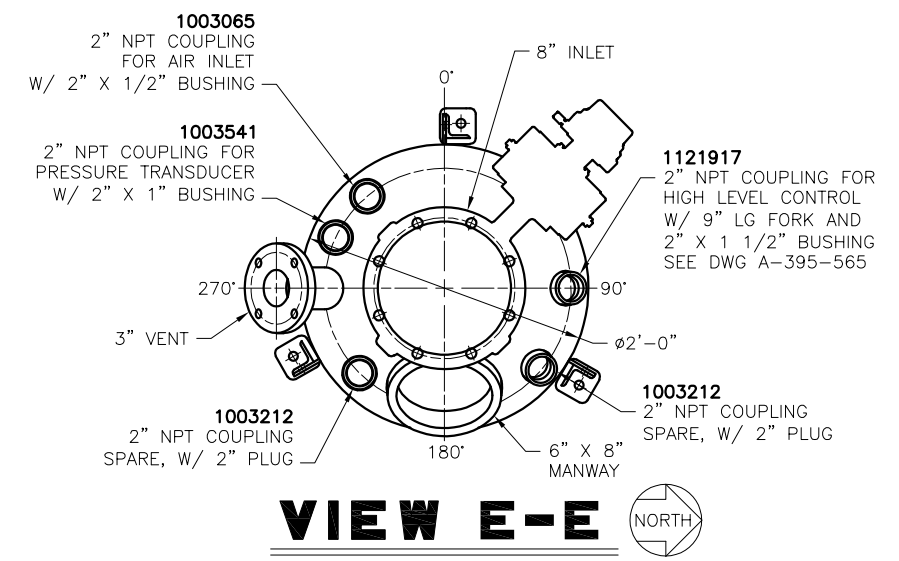
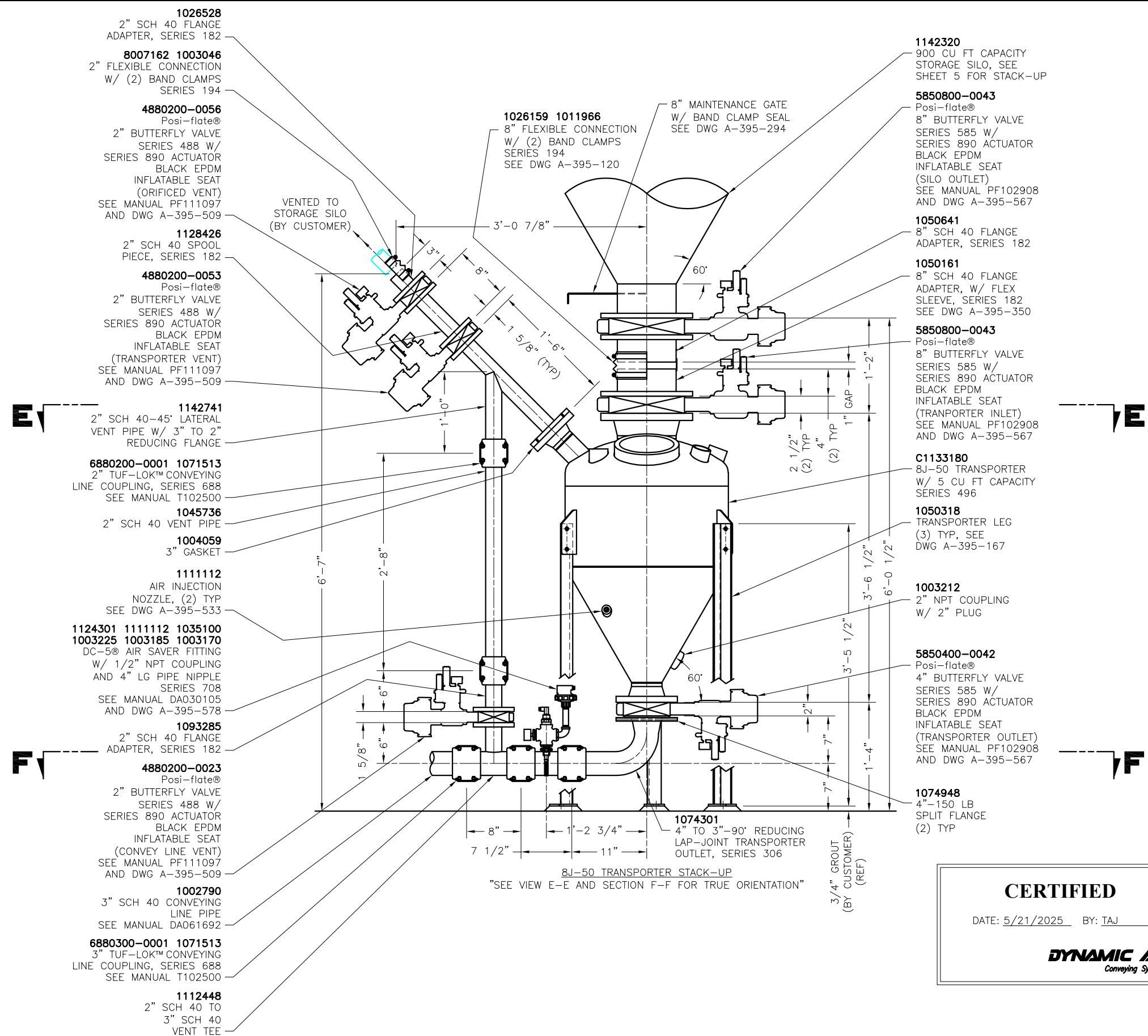
CERTIFIED	
DATE: <u>5/21/2025</u>	BY: <u>TAJ</u>
<i>DYNAMIC AIR</i> <i>Conveying Systems</i>	



VIEW B-B

[illegible]

NOTE:
1. SEE SHEET 1 FOR GENERAL NOTES, SYSTEM DESIGN DATA
AND FASTENER SCHEDULE.



CERTIFIED

DATE: 5/21/2025 BY: TAJ

DYNAMIC AIR
Conveying Systems

[illegible]