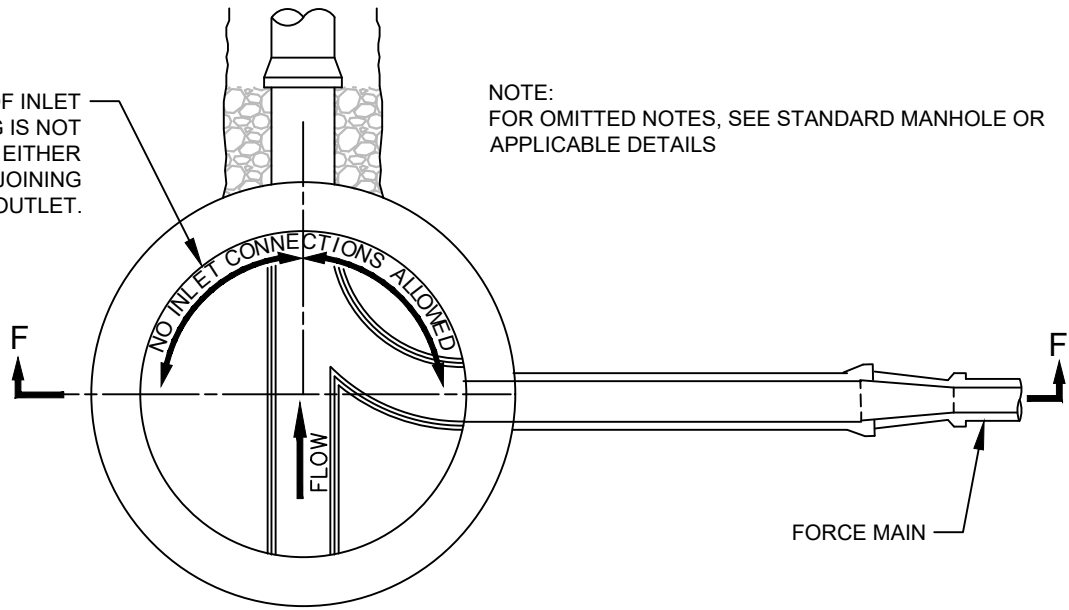
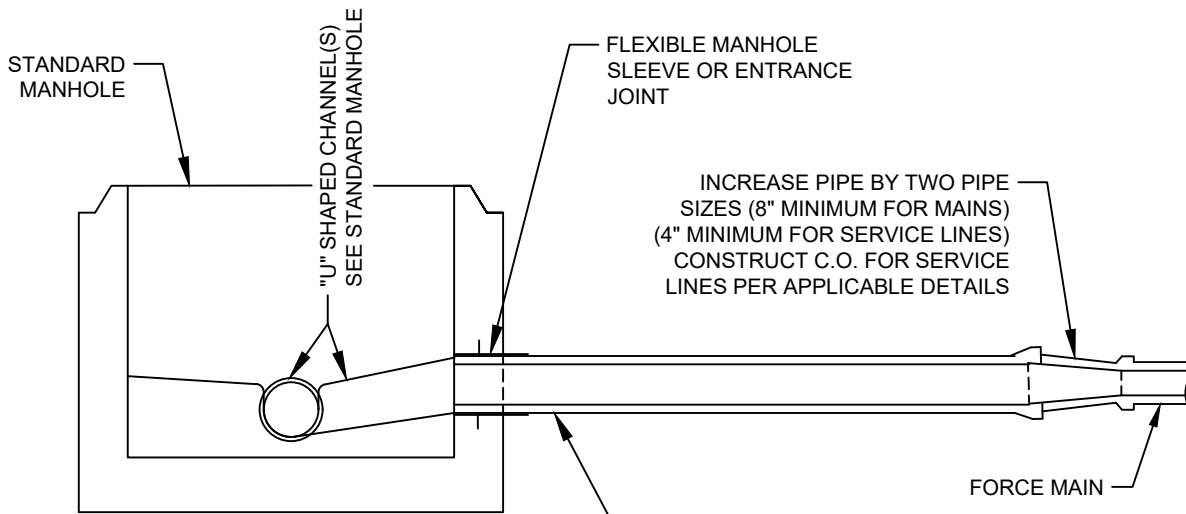


CENTERLINE OF INLET PIPING IS NOT ALLOWED IN EITHER QUADRANT ADJOINING THE MANHOLE OUTLET.

NOTE:
FOR OMITTED NOTES, SEE STANDARD MANHOLE OR APPLICABLE DETAILS



SECTIONAL PLAN
N.T.S.



SECTION F-F
N.T.S.

NOTE:
ALSO SEE SANITARY SEWER SERVICE DETAIL

INCREASE PIPE BY TWO PIPE SIZES (8" MINIMUM FOR MAINS) (4" MINIMUM FOR SERVICE LINES) CONSTRUCT C.O. FOR SERVICE LINES PER APPLICABLE DETAILS

CONSTRUCT A MINIMUM OF 8 FEET OF GRAVITY SEWER @ 2% TO 5% GRADE

STANDARD DETAIL	
Metropolitan Sewerage District of Buncombe County, North Carolina	
TYPE I FORCE MAIN CONNECTION	
DATE APPROVED: MARCH 2017	9.20 - 01