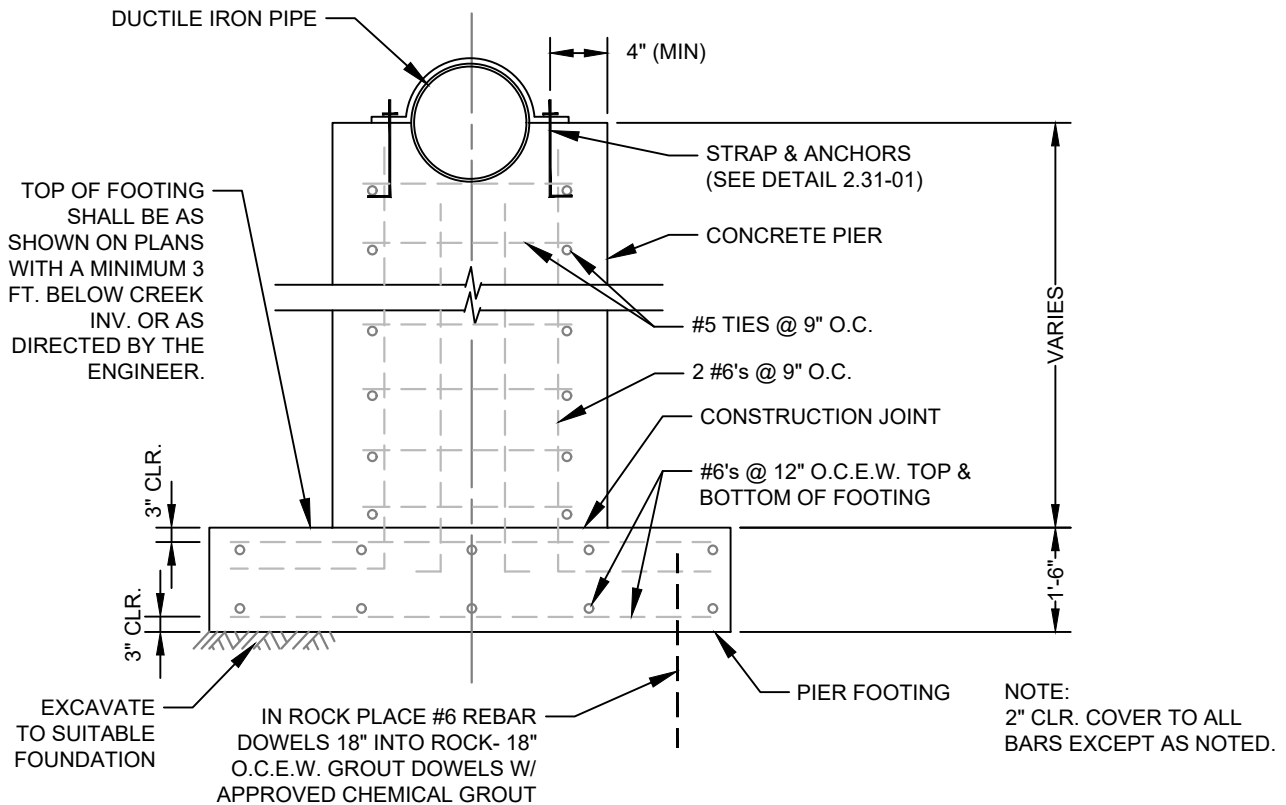


SEE CHART BELOW FOR DIMENSIONS A, B & C

PIPE SIZE	"A"	"B"	"C"
8" - 16"	2'-4"	6'-4"	3'-0"
18" - 24"	3'-0"	7'-0"	4'-0"
30" - 42"	4'-6"	8'-6"	5'-0"
48"	6'-0"	11'-0"	6'-0"
54"	6'-6"	12'-0"	7'-0"
60"	7'-0"	13'-0"	8'-0"

PLAN
N.T.S



SECTION
N.T.S

NOTES:

1. CONCRETE SHALL ATTAIN A COMPRESSIVE STRENGTH OF 4000 PSI WITHIN 28 DAYS.
2. SEE CROSSING DETAIL AND STAP/ANCHOR DETAILS FOR ADDITIONAL INFORMATION.

STANDARD DETAIL	
Metropolitan Sewerage District of Buncombe County, North Carolina	
CONCRETE PIER	
DATE APPROVED: MARCH 2017	3.02 - 01